

**EBZW**  
**ZWARTBERG**

28 JUN 19 **(19-1)**

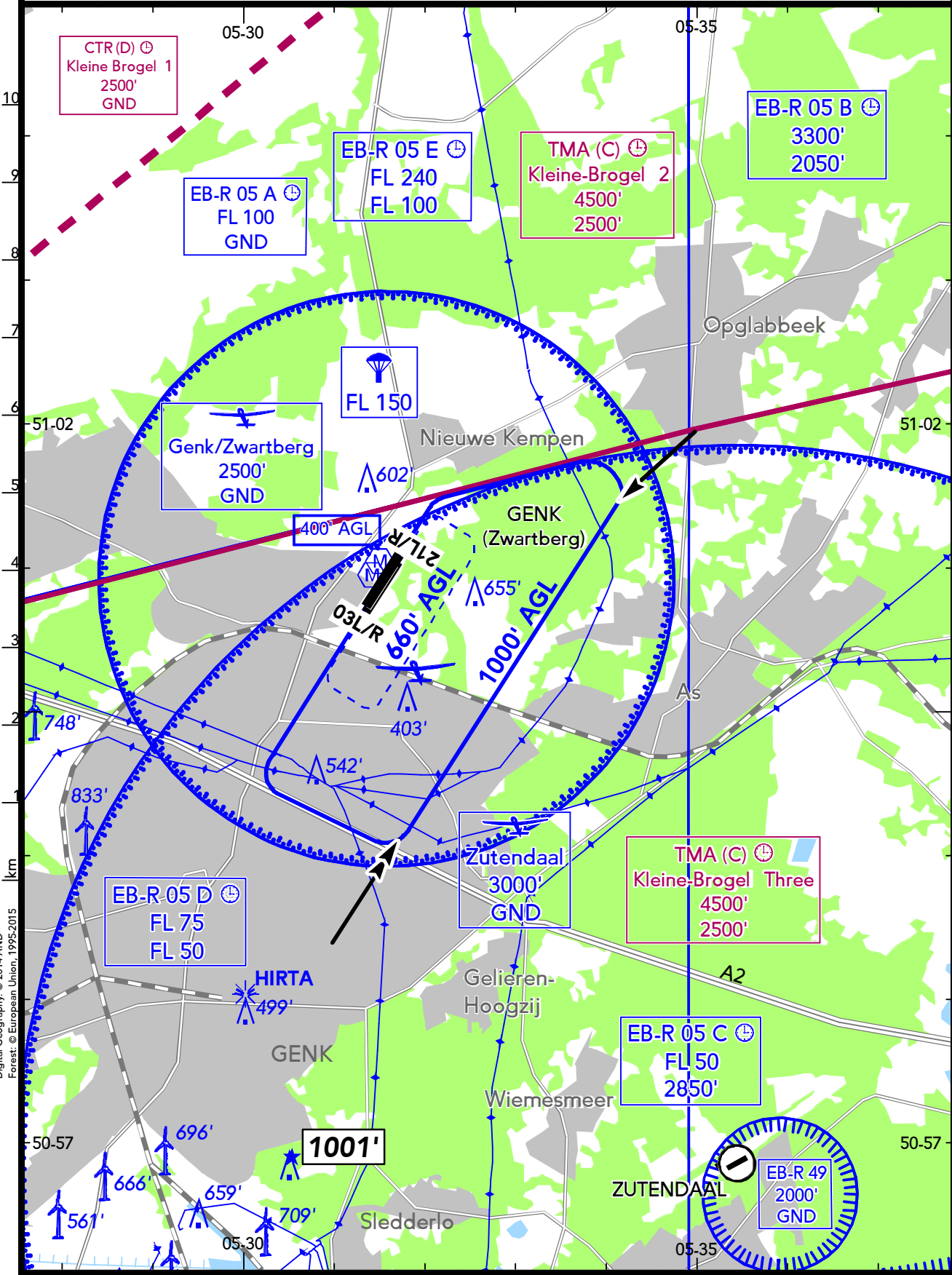
**GENK**  
**BELGIUM**

VAR 20E

BRIEFING STRIP™

LOCATION Elev <b>278'</b> /85m N51 00.9 E005 31.6	FIS BELGA INFORMATION <b>129.325</b> <sup>(1)</sup> BRUSSELS INFORMATION <b>126.900</b> <sup>(2)</sup>
AIRSPACE KLEINE-BROGEL APPROACH <b>134.480</b> <sup>(3)</sup>	AFIS GENK RADIO <b>120.405</b> (en)

(1) MIL (2) CIV (3) Kleine Brogel TMA



Digital Geography, © 2014 AND  
 Forest: © European Union, 1995-2015

**EBZW**  
**ZWARTBERG**

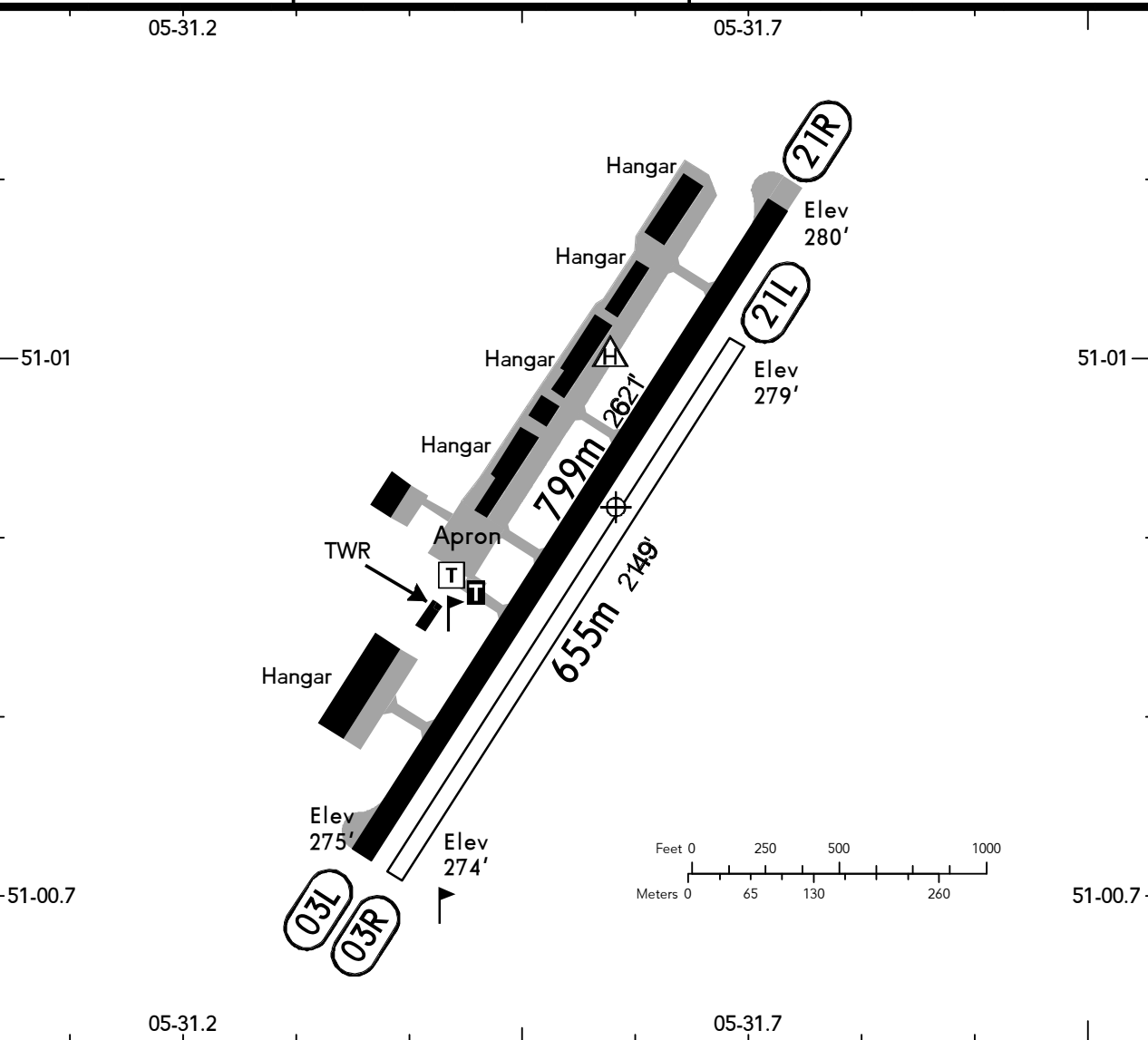
28 JUN 19 **(19-2)**

**GENK**  
**BELGIUM**



BRIEFING STRIP™

LOCATION Elev <b>278'</b> /85m N51 00.9 E005 31.6	AFIS GENK RADIO <b>120.405</b> (en)	ADMITTED AIRCRAFT 
---	--	-----------------------



RWY No	Dimension (m) - Surface	TORA (m)	LDA (m)	Strength	Lights
03L 21R	799 x 23 Asphalt	799	799	10t MPW	---
03R <sup>①</sup> 21L	655 x 18 Grass	655	655	3.5t MPW	---

<sup>①</sup> Only for home-based pilots.

Pay attention to the EB-R5A N of AD.  
 Intensive glider flying on Sat, Sun & Hol.  
 Parachuting at MEEUWEN, FL 150, Sat, Sun & Hol, SR-SS.  
 Due to noise abatement adhere strictly to the traffic circuit.